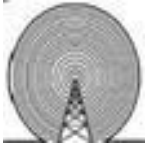


The Ham Arundel News

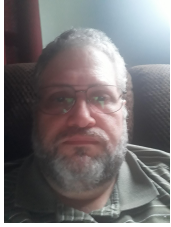


Providing Fellowship and Community Service through
Amateur Radio since 1951



April 2021

43rd Year of Publication



**Prez
Sez**

Spring is here and with that, we are starting a new program at the Anne Arundel Radio Club (AARC). This program helps grow new Ham's with the help of current members. Just like being an Elmer, which provide technical support in getting on the air.

The name Elmer can from a person who wrote into the ARRL and talked about a ham that helped in getting him on the air. The ham's name was Elmer, and the name came to be know as person who helps a new ham to get started.

The program we are starting is not only to provide technical support to new hams but to welcome new hams into the club. Most of our new members are not only new to amateur radio but don't know anyone in the club. This program would pair up a new member with a current member who would be contacting the new ham with what is going on at the club. This would be done via email or phone, usually once per month or week. In other words, being a friend to the new ham.

When I would talk about this, one name also came to mind. That is Milford Craig, I still

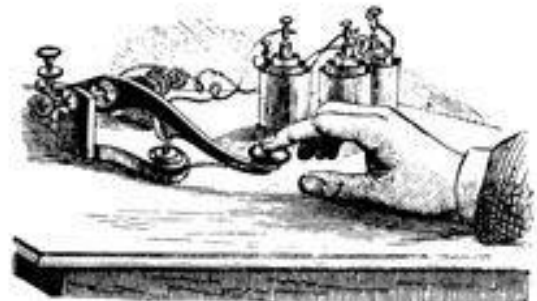
remember one of my first meetings. I was waiting for the meeting to start and over came Milford with his big smile and said "Hi I'm Milford" . It really made me feel at home. So that is why we are calling this being a Milford.

73

Eric
KC3GDV

Contents

Newsletter Deadline	2
An Antenna Project	2
Special Note	2
Club News	3-4
Calendar	5
AARC Repeaters, radio info	6
Other Repeaters, Nets, Echolink	7-9
Special Event Stations	10
Contesting	11



**The Ham Arundel News and
W3VPR.org are the official
publications of
The Anne Arundel Radio Club
(ARRL Club No.0484)**

Mailing Address:

Anne Arundel Radio Club
Post Office Box 308
Davidsonville, MD 21035-0308

Editor: Phil Nelson / NO3N

Send newsletter articles, information and
questions to: newsletter@w3vpr.org

Mailing Address:

Anne Arundel Radio Club
Post Office Box 308
Davidsonville, MD 21035-0308

Meetings:

Business Meeting 1st Thursday at 7:30 PM
Program/Activity 3rd Thursday at 7:30 PM
Board Meeting - see calendar

Dues:

\$30 per year, payable December 1st
Discounts available for family members and
students

World Wide Web: www.w3vpr.org

Ham Arundel News Deadline

The deadline for the May 2021 issue of the
newsletter will be Saturday, April 24. If you
have something you wish to share or
contribute, please email newsletter@w3vpr.org
and include "NEWSLETTER" in the subject
line.

Other members may appreciate hearing of your
experiments, projects and ideas. Consider sharing.

An Antenna Project
by Richard Colarco, KE0IOW

Recently I built a portable magnetic loop antenna
for 20 meters. It was cheap and easy. Here is a link
to the article that shows how to build it.

<[https://swling.com/blog/2018/05/how-to-build-s
m0vpos-20-meter-magnetic-loop-antenna/](https://swling.com/blog/2018/05/how-to-build-s-m0vpos-20-meter-magnetic-loop-antenna/)>

The antenna works quite well. It is a great receiving
antenna on all bands as-is. For transmission, I
found it will tune on all bands from 10 through 80
meters. Bandwidth on 20 and 40 meters is quite
good, rather narrow on other bands.

If you want to run higher than QRP power, you will
have to replace the gimmick capacitor with a high
voltage variable capacitor.

Mag loops have very strong near field radiation, so
keep people and pets away from the antenna when
transmitting.

The antenna exhibits noticeable directionality.

No ground appears necessary.



Special Note

The decision to allow facilities to open at 50
percent capacity in the county may allow for a
return to some form of normalcy for the club. We
may soon be returning to on-site meetings, training
and testing providing we follow social distancing
guidelines.



Club News

New Members and License Updates

James 'Jim' Blake, KE3N, Extra
Eric Ingle, KC3RPB, Technician
Stephen Kisielka, -- , None

Brian Shea, KC3QXS, General
Brian Waite, KC3PFR, General

Holly Net Controllers Needed

Every weekday morning, except for holidays, the club holds the Holly Net between 7 and 9 am. It is named in memory of Holly Bevan who conducted the morning net for 30 years. This is an informal Net.

The club is in need of people who can serve as Net control operators. You must have a General license or above. The control operators basically direct the net by calling on the members who check in in the order of check-in. An easy script is provided for use when the net is opened and closed and we use Netlogger to help control the flow. We need volunteers who can take the duties either once a month or once a week, particularly needed are controllers for Wednesday mornings.

For information or to volunteer contact Bill, NX2II, at <holly.net@w3vpr.org> which redirects to his personal email.

~~~~~  
**Under Consideration**

The club is investigating the possible use of Echolink access to the repeaters and a VARA-FM packet station.

VARA-FM has replaced Winlink and is faster than Winlink. It is consistent with use by the county EOC and ARES.

## Field Day 2021

Preparations are underway for the upcoming Field Day. As there is a chance COVID restrictions will be in effect, proposals are currently close to what was in effect for 2020. There are a few additions being considered.

Among the changes being considered are more generators, a fourth station to be added at the pavilion and even the possibility of a fifth station which would be for GOTA (Get On The Air). Whether there will be



facilities for food remains to be determined. Also to be determined are antenna and inclement weather plans.

Last year the ARRL allowed home stations to be included in Field Day. This is being considered for the 2021 Field Day. However, for the club to receive credit for home stations a common identifier needs to be used by participants.

The club is hoping to have operators for CW, phone and digital modes.

If you wish to participate in the planning, contact Bryan Mary, K3HMX, <field.day@w3vpr.org>.

## Assistance needed for SK Widow

From the Daughter of Neil Bloomberg W3NTP:

*“Hi All -*

*I wanted to put out a request for those possibly interested in helping out.*

*My mom is looking for some folks that have Ham Radio Antenna knowledge to take down my Dad's Antenna set up at the house. Dad had a wired setup that was hosted up in a tree and connected to the roof.*

*For those of you who knew my Dad: Neil Bloomberg (NRB) also known as W3NTP, Ham Radio was a big passion of his, he taught the Technician and General Class license materials as part of the ARINC Radio Club for years and was active with Field Day each year and the Anne Arundel Radio Club.*

*Since he passed away last year, this has been on Mom's list: to find people that would be able to do this properly and coil things up nicely so that when my Mom sells the house in another year or so it is taken care of for the future owners*

*If anyone is interested in helping, please let me know. Thanks.”*

Contact Kurt WA3TOY at  
<arswa3toy@verizon.net> or 443-956-0172.

~~~~~

Workshop

The Board of Directors has proposed making changes to the workshop beside the clubhouse. The idea is to create workspaces for kit building. Additionally the workshop needs some rehab work to make it more desirable for people to use.

Policy Manual

The Rules Committee will be considering items to include in a Policy Manual for the club. This would clarify matters without the need to constantly update the club bylaws. To participate in the Rules Committee contact Chuck Tanner, W3ACT, <rules.chair@w3vpr.org>.

At the March 25 meeting the Rules Committee began to develop a policy for the proposed use of Echolink. Under consideration is the possibility of limiting the number of potential users at any one time. Investigations will continue.

~~~~~

### Operating Course

The National Electronics Museum is sponsoring its well-received Operating Course again starting April 15, 2021 and running each Thursday for 11 weeks from 6:30 to 9:30 EDST on Zoom. There is no charge for participation. The purpose of these classes is to provide information to help licensed radio amateurs to participate in the many on-the-air activities available in the hobby. The presenters are very experienced in their topics—many are nationally known experts—and they will be available to answer your questions following the presentations. The exact order of presentations will be determined and published in the next few weeks. These are independent presentations, and participants are free to participate in any or all of the evenings. Feel free to pass this announcement along to others, but we request that all prospective attendees register by emailing Tom Christovich at <[tom.christovich@gmail.com](mailto:tom.christovich@gmail.com)>. You will receive confirmation of enrollment and the Zoom link for attendance by reply email.

# Calendar

## Club

Due to social distancing requirements, club meetings are being held on Zoom and there have been some changes. The meeting schedule for April - May is:

April 1 - Membership Meeting, 7:30 PM

April 8 - Board meeting

April 15 - Membership Presentation Meeting, 7:30 PM

April 22 - Antenna Committee, 6:30; Rules Committee, 7:30 PM

May 6 - Membership Meeting, 7:30 PM

May 13 - Board meeting

May 20 - Membership Presentation Meeting, 7:30 PM

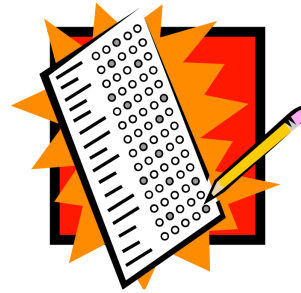
May 27 - Antenna Committee, 6:30; Rules Committee, 7:30 PM

Invitations to the membership meetings will be emailed to the membership before the meetings. You must request meeting information from the President for Board meetings, the Rules Committee Chairman, the Vice President for the Antenna Committee meetings, or the chairman of the Rules Committee for the Rules Committee meeting

## Training

The club's General Class begins on April 24.

## Testing



**The dates below are tentative. A relaxation of state mandates may allow testing to resume. Pre-registration is required in the event there are cancellations.**

April 10 - 1:00 PM. Anne Arundel Radio Club, Davidsonville Family Recreation Center. Registration begins at 12:30 PM. <https://www.w3vpr.org/node/353>

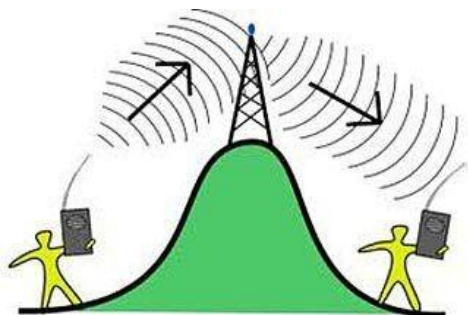
April 17 - 9 AM. Laurel Amateur Radio Club, Women's Club of Laurel. <https://www.larcmd.org/conc/index.php/exams-lau-rel>

April 27 - 6:30 AM. Maryland Mobileers Amateur Radio Club, National Electronics Museum, Linthicum Heights. <https://sites.google.com/site/marylandmobileers/v-e-testing>

You must have a photo identification, FRN number, as well as copies and originals of your license and CSCE if your license does not show your current license status. The exams are free but the newly announced FCC fee is pending final announcements and setup.

# AARC REPEATER FREQUENCIES

| Davidsonville | Millersville | Glen Burnie | Annapolis |
|---------------|--------------|-------------|-----------|
| 147.105+      |              | 147.075+    |           |
| 223.880-      | 224.560-     |             |           |
| 444.400+      |              |             | 442.300+  |



**PL 107.2 is active for all repeaters**  
**The 147.105, 147.075 and 444.400 repeaters are frequently linked. Please allow 2-3 seconds after the courtesy beep to allow for the link to reset.**

## Visiting AARC

Visitors are welcome at all meetings and on all nets.

Meetings are held in the Clubhouse at the Davidsonville Family Recreation Center, Queen Anne Bridge and Waysons Roads off Rt. 214 near Davidsonville, MD.

For en-route directions make contact on the 147.105 repeater.

## AARC Service Frequencies



**When assisting in community events, Field Days or races, AARC uses 146.430 MHz as the primary communications frequency. In the event the frequency is busy, the backup is 146.475 MHz**

# Repeaters

## 2 Meter Repeaters

| Location         | Frequency | Tone  | Notes                                        |
|------------------|-----------|-------|----------------------------------------------|
| Davidsonville    | 147.105+  | 107.2 | AARC Repeater with morning traffic net.      |
| Glen Burnie      | 147.075+  | 107.2 | AARC repeater Located in Northern AA County. |
| Brandywine       | 147.150+  | 114.8 | SMARC Repeater.                              |
| Prince Frederick | 145.350-  | 156.7 | SPARC/CARC Repeater.                         |
| Laurel           | 147.225+  | 156.7 | Laurel ARC Repeater.                         |
| Millersville     | 146.805-  | 107.2 | Repeater.                                    |
| Barstow          | 145.350-  | 156.7 | SPARC Repeater                               |
| Baltimore        | 147.030+  | 156.7 | BRATS Repeater.                              |
| Westminster      | 145.410-  | 114.8 | CCARC Repeater                               |
| Sykesville       | 147.285+  | 107.2 | CCARC Repeater                               |
| Columbia         | 147.135+  | 156.7 | Columbia ARC Repeater                        |
| Cooksville       | 147.390+  | 156.7 | Columbia ARC Repeater                        |
| Bladensburg      | 146.610-  | N/A   | GMRA Repeater                                |
| Greenbelt        | 146.880-  | N/A   | GMRA Repeater                                |
| District Heights | 145.230-  | 110.9 | Prince George's ARES                         |

## 1.25 Meter Repeaters

| Location      | Frequency | Tone  | Notes                                                 |
|---------------|-----------|-------|-------------------------------------------------------|
| Davidsonville | 223.880-  | 107.2 | AARC 1.25M repeater *check to see if tied into 7.105. |
| Millersville  | 224.560-  | 107.2 | AARC repeater Located in Northern AA County.          |
| Barstow       | 223.960-  | 186.2 | Southern MD Digital Group, analog                     |
| Baltimore     | 224.960-  | N/A   | BRATS Repeater.                                       |

## 70cm Repeaters

| Location       | Frequency | Tone  | Notes                             |
|----------------|-----------|-------|-----------------------------------|
| Davidsonville  | 444.400+  | 107.2 | AARC 70 cm Repeater.              |
| Annapolis      | 442.300+  | 107.2 | AARC 70 cm Repeater               |
| Millersville   | 449.125-  | 107.2 | Maryland Mobileers Repeater.      |
| Upper Marlboro | 443.600+  | 103.5 | SMARC 70 cm Repeater.             |
| Sunderland     | 444.950+  | 156.7 | CARC 70 cm Repeater               |
| Baltimore      | 448.325-  | N/A   | BRATS 70 cm Repeater              |
| Westminster    | 449.875-  | 127.3 | CCARC 70 cm Repeater, FM and C4FM |
| Baltimore City | 448.275-  | 156.7 | Columbia ARC Repeater             |
| Columbia       | 449.475-  | 156.7 | Columbia ARC Repeater             |
| Lanham         | 447.325-  | 110.9 | Prince George's ARES              |

## Packet Stations

| Location      | Frequency | Call     | Notes                              |
|---------------|-----------|----------|------------------------------------|
| Davidsonville | 145.050   | W3VPR    | AARC Club packet node running JNOS |
| Davidsonville | 145.010   | W3VPR-5  | Digipeter Relay to EOC Winlink     |
| Millersville  | 145.010   | W3AAC-5  | Digipeter Relay to EOC Winlink     |
| Glen Burnie   | 145.010   | W3AAC-10 | EOC Winlink system and digipeter   |

N/A - no tone required

## Amateur Radio NETS

| Day                        | Name                                   | Frequency (MHz)                                                             | Time          |
|----------------------------|----------------------------------------|-----------------------------------------------------------------------------|---------------|
| Daily                      | Baltimore Traffic Net                  | 146.670                                                                     | 1830          |
| Daily                      | Maryland Emergency Phone Net           | 3.820                                                                       | 1800          |
| Daily                      | Maryland-DC-Delaware Traffic Net       | 3.643                                                                       | 1900 and 2200 |
| Daily                      | Maryland Slow Net                      | 3.563                                                                       | 1930          |
| Weekdays                   | The "Holly Net"                        | 147.105+ PL107.2<br>147.075+ PL107.2<br>440.400+ PL107.2                    | 0700          |
| Sunday                     | AA County ARES Net                     | 146.805- PL107.2                                                            | 2000          |
| Sunday                     | Columbia Group Net                     | 147.135+ PL156.7<br>147.390+ PL156.7<br>448.275- PL156.7<br>448.275-PL156.7 | 2100          |
| Sunday (1st)               | REACT Net                              | 146.805- PL107.2                                                            | 1930          |
| Monday                     | Calvert ARA Net                        | 145.350- PL156.7                                                            | 1930          |
| Monday                     | Maryland Mobileers Net                 | 146.805- PL107.2                                                            | 1930          |
| Monday                     | Queen Anne's ARC Net                   | 146.940- PL107.2                                                            | 2000          |
| Monday                     | Delmarva Amateur Radio Enhancement Net | 146.820- PL156.7                                                            | 2100          |
| Tuesday                    | Kent Amateur Radio Society 2-meter Net | 147.375+ PL156.7                                                            | 1900          |
| Tuesday                    | PG-ARES Training Net                   | 145.230- PL110.9                                                            | 1900          |
| Tuesday (3rd)              | Anne Arundel - CERT                    | 442.300+ PL107.2                                                            | 1900          |
| Wednesday                  | Boating Net                            | 146.805- PL107.2                                                            | 1930          |
| Wednesday                  | Elmer Net                              | 145.350- PL156.7                                                            | 1930          |
| Wednesday                  | AARC Talk Net                          | 147.105+ PL107.2<br>147.075+ PL107.2<br>440.400+ PL107.2                    | 2000          |
| Wednesday (2nd)            | AERO 440 Net                           | 449.575- PL123.1                                                            | 2000          |
| Wednesday (4th)            | AERO 140 Net                           | 147.240+ PL123.1                                                            | 2000          |
| Wednesday (odd)            | Laurel Bi-weekly Club Net              | 147.225+ PL 156.7                                                           | 2030          |
| Wednesday (after 3rd Mon.) | Maryland HFHospital Net                | 3.820+/-                                                                    | 1900          |

## Echolink (E), Allstar (A) and IRLP (I) Repeater Access

| Repeater                | Location                              | PL Tone                        | Nodes                           |
|-------------------------|---------------------------------------|--------------------------------|---------------------------------|
| W1AW                    | Newington, CT (ARRL)                  | 100 Hz                         | E - W1AWBDCT (501443); I - 4292 |
| N3UR                    | Jarrettsville                         |                                | E - 297689                      |
| K3YGG                   | Bethesda, NIH                         | 156.7 Hz                       | E - 247914                      |
| K3GMR                   | Bladensburg                           |                                | E - 796114                      |
| W3FDK                   | Frederick                             | 141.3 Hz                       | E - 614369                      |
| W3CU                    | Millersville                          | 107.2 Hz                       | E - 90911 (KA2JAI-R)            |
| WA3NAN                  | Greenbelt                             |                                | E - 40045                       |
| WA3FSJ                  | Port Deposit                          | 107.3 Hz                       | E - 585690                      |
| K3WX                    | Ashton                                | 156.7 Hz                       | E - 251966; I - 4088            |
| WB3GXW                  | Silver Spring                         | 156.7 Hz                       | E - 147225 (WASH_DC)            |
| N3HIA                   | Dundalk                               | 192.8 Hz                       | E - 480134; A - 49358           |
| K3ARS                   | Warton                                | 156.7 Hz                       | E - 249466                      |
| N3HIA                   | Joppa                                 | 103.5 Hz                       | E - 245186; A - 493800          |
| N3UHD<br>N3ITA<br>K3KMA | Clear Spring<br>Frederick<br>Thurmont | 79.7 Hz<br>79.7 Hz<br>103.5 Hz | E - 481682                      |
| K3VEC                   | Silver Spring                         | 156.7 Hz                       | E - 84345; I - 4712             |
| K3ORG                   | Ocean City                            | 151.4 Hz                       | E - 54945; I - 4291             |
| W3SMD                   | Barstow, Prince Frederick             | 186.2 Hz                       | A- 513100                       |
| KX3B                    | Elkton                                | 131.8 Hz                       | A - 59149                       |
| N3KTX<br>N3KZS          | Frederick<br>Manchester               | 107.2 Hz                       | I - 7070                        |
| KD3SU                   | Boonsboro                             | 94.8 Hz                        | I - 8657                        |
| WA3UMY                  | Lexington Park                        |                                | I - 4820                        |
| N3PX                    | Barstow, Prince Frederick             | 156.7 Hz                       | E - 315280 (WB3BW-R)            |
| K3EMD                   | Trappe                                | 156.7 Hz                       | E - 969856 (W3GAC-R)            |

## Special Event Stations

### Scouting

Apr 24, 1400Z-1930Z, **W1BSA Birthday of Scouting Event**, W1BSA, Fall River, MA. USTNE ne1pl.org. 14.259. QSL. Rick Emord, 135 Wareham St., Middleboro, MA 02346.

Apr 24, 1300Z-1900Z, **Woronoko Heights Outdoor Adventure**, W1M, Russell, MA. Western Mass. Council--BSA. 14.290 14.060 10.115 7.190. QSL. Tom Barker, 329 Faraway Road, Whitefield, NH 03598. SES operating from the Horace Moses Scout Reservation in western Mass. SASE for QSL

---

### Historical Events

Apr 10-11, 1200Z-2359Z, **Celebration of the 155th Anniversary of Auburn University** W4E, 7.060 7.074 and 7.047.5 14.074 and 14.080 7.070. QSL. Stew Schneller, 1869 Hillton Court, Auburn, AL 36830-2693. <[www.qrz.com/db/k4jop](http://www.qrz.com/db/k4jop)>

Apr 10, 1600Z-2300Z, **USS Midway Museum Ship Special Event: Doolittle Raid**, NI6IW, San Diego, CA. USS Midway (CV-41) Museum Ship. 7.250 14.320 14.070 (PSK31) DSTAR via PapaSystem repeaters. QSL. USS Midway CV-41 COMEDTRA NI6IW, 910 N Harbor Dr, San Diego, CA 92101. Please include SASE. <[www.qrz.com/db/ni6iw](http://www.qrz.com/db/ni6iw)>

Apr 17-Apr 24, 0000Z-2359Z, **Celebrating the Louisiana Purchase**, W5L, West Monroe, LA. NorthEast Louisiana Amateur Radio Club. 14.250 21.250 7.250 3.850. QSL. Jim Ragsdale, W5LA, 111 Eagle Lake Drive, West Monroe, LA 71291. <https://www.qrz.com/db/W5L>

Apr 24, 1500Z-2100Z, **156th Anniversary of Sultana Disaster**, W5S, West Memphis, AR. AG5QY. 14.240. QSL. Marc Gwin, 1402 Stratford Drive, West Memphis, AR 72301. <<https://ag5qy9.wixsite.com/ag5qy>>

Apr 24, 1600Z-2200Z, **OC&E Woods Line Last Train 31st Anniversary**, W7VW, Klamath Falls, OR. Klamath Basin Amateur Radio Society. 14.074. Certificate & QSL. Jim English, 2602 Wiard Street, Klamath Falls, OR 97603. <[wo7v@arrl.net](mailto:wo7v@arrl.net)> or <<https://www.facebook.com/kfalls.radio>>

---

### Amateur Radio

April 10-11, 0001Z-2359Z, **The Annual Nancy Kott Memorial KN0WCW Event**, KN0WCW, Leonardo, NJ. FISTS North America. 10.058 7.058 10.118 3.558. Certificate. Cody Codianni, 413 Martin Court, Leonardo, NJ 07737

Apr 18-Apr 19, 1300Z-0400Z, **World Amateur Radio Day**, W7W, Rochester, NY. W2JLD/Special event coordinator. Echolink \*ROC-HAM\* CONFERENCE 531091 Allstar 2585, 47620, 53130. QSL. John Derycke, W2JLD, 85 Amherst St #2, Rochester, NY 14607. A special event qsl card will be available

---

### Parks On The Air

April 1 - December 31, **Quebec Parks On The Air (QcPOTA)**, VE2GT and VE2NCG. Certificate. no QSL

Apr 17-Apr 19, 1400Z-0200Z, **Texas State Parks On the Air (TSPOTA)**, K5LRK, The Colony, TX. Lake Area Amateur Radio Club. CW Phone VHF. QSL. See website, for, Information. Times are daily. K5LRK on as a special event station. Contest: Activate as many Texas parks as possible. [www.k5lrk.com](http://www.k5lrk.com) or <[www.tspota.org](http://www.tspota.org)>

---

### Miscellany

Apr 10, 1700Z-2100Z, **Spring has Sprung**, W4D, Kodak, TN. Sevier County Emergency Radio Service. 14.280 +/- .020 USB 7.200 +/- .020 LSB 14.070 +/- .020 PSK31 7.070 +/- .020 PSK31 CW only on 7.060 +/- .010. QSL. . For additional information, go to <[www.eventqsl.webs.com](http://www.eventqsl.webs.com)>

Apr 14-Apr 22, 1200Z-2200Z, **Maritime Radio Day 2021**, GERMANY. CW only. Certificate & QSL. Rolf Marschner, Narzissenweg 10, 53359 Rheinbach, GERMANY. This is an operating event. Please see website for rules. <[mrd.sfk-bremen.com](http://mrd.sfk-bremen.com)>

Apr 24-Apr 25, 1400Z-2359Z, **San Jacinto Day Special Event**, K5T, Nacogdoches Amateur Radio Club. 7.216 14.260 21.350 28.350. QSL. Army Curtis, 167 CR 2093, Nacogdoches, TX 75965. All contacts will be confirmed in LOTW.

---

# Contest Corral

# April 2021

Check for updates and a downloadable PDF version online at [www.arrl.org/contest-calendar](http://www.arrl.org/contest-calendar).

Refer to the contest websites for full rules, scoring information, operating periods or time limits, and log submission information.

| Start - Finish | Date-Time | Date-Time | Bands   | Contest Name                                | Mode      | Exchange                                   | Sponsor's Website                                                                                      |
|----------------|-----------|-----------|---------|---------------------------------------------|-----------|--------------------------------------------|--------------------------------------------------------------------------------------------------------|
| 1              | 1700      | 1 2000    | 3.5     | SARL 80-Meter QSO Party                     | Ph        | RS, serial, grid locator                   | <a href="http://www.sarl.org.za">www.sarl.org.za</a>                                                   |
| 1              | 1800      | 1 2200    | 28      | NRAU 10-Meter Activity Contest              | CW Ph Dig | RS(T), 6-char grid square                  | <a href="http://nrrfcontest.no">nrrfcontest.no</a>                                                     |
| 1              | 1900      | 1 2100    | 1.8-50  | SKCC Sprint Europe                          | CW        | RST, SPC, name, mbr or "none"              | <a href="http://www.skccgroup.com">www.skccgroup.com</a>                                               |
| 2              | 2000      | 2 2100    | 1.8-14  | K1USN Slow Speed Test                       | CW        | 20 WPM max, Name, SPC                      | <a href="http://k1usn.com/sst.html">k1usn.com/sst.html</a>                                             |
| 3              | 1000      | 4 0400    | 14      | PODXS 070 Club PSK 31 Flavors Test          | Dig       | SPC, mbr or name                           | <a href="http://www.podxs070.com">www.podxs070.com</a>                                                 |
| 3              | 1400      | 4 0200    | 1.8-144 | Louisiana QSO Party                         | CW Dig Ph | RS(T), LA Parish or SPC                    | <a href="http://laqp.louisianacontestclub.org">laqp.louisianacontestclub.org</a>                       |
| 3              | 1400      | 4 0200    | 1.8-144 | Mississippi QSO Party                       | CW Ph Dig | RS(T), MS county or SPC                    | <a href="http://www.arrmiss.org">www.arrmiss.org</a>                                                   |
| 3              | 1400      | 4 2200    | 3.5-28  | Florida State Parks on the Air              | CW Ph Dig | Park ID or SPC                             | <a href="http://fspota.org/rules">fspota.org/rules</a>                                                 |
| 3              | 1500      | 4 1500    | 1.8-28  | SP DX Contest                               | CW Ph     | RS(T), SPC province or serial              | <a href="http://spdxcontest.pzk.org.pl">spdxcontest.pzk.org.pl</a>                                     |
| 3              | 1600      | 4 1600    | 3.5-28  | EA RTTY Contest                             | Dig       | RSQ, EA province or serial                 | <a href="http://concurso.ure.es/en">concurso.ure.es/en</a>                                             |
| 4              | 0000      | 4 0400    | 3.5-14  | North American SSB Sprint Contest           | Ph        | Other's call, your call, serial, name, SPC | <a href="http://sbsprint.com/rules">sbsprint.com/rules</a>                                             |
| 4              | 1500      | 4 1730    | 3.5,7   | DARC Easter Contest                         | CW Ph     | RS(T), DOK or serial                       | <a href="http://www.darc.de">www.darc.de</a>                                                           |
| 5              | 1900      | 5 2300    | 144     | 144 MHz Spring Sprint                       | CW Ph Dig | 4-char grid square                         | <a href="http://sites.google.com/site/springvhfupsprints">sites.google.com/site/springvhfupsprints</a> |
| 6              | 0100      | 6 0159    | 1.8-50  | Worldwide Sideband Activity Test            | Ph        | RS, age group (OM, YL, or Youth)           | <a href="http://wsac.com/rules.html">wsac.com/rules.html</a>                                           |
| 6              | 0100      | 6 0300    | 3.5-28  | ARS Spartan Sprint                          | CW        | RST, SPC, power                            | <a href="http://arsqp.blogspot.com">arsqp.blogspot.com</a>                                             |
| 6              | 1700      | 6 1900    | 3.5-14  | RTTYops Weekends                            | Dig       | Other's call, your call, serial, name      | <a href="http://rttyops.wordpress.com">rttyops.wordpress.com</a>                                       |
| 7              | 1300      | 7 1400    | 1.8-28  | CWops Mini-CWT Test                         | CW        | Name, mbr or SPC                           | <a href="http://cwops.org/cwops-tests">cwops.org/cwops-tests</a>                                       |
| 7              | 1700      | 7 2000    | 144     | VHF-UHF FT8 Activity Contest                | Dig       | 4-char grid square                         | <a href="http://ft8activity.eu/index.php/en">ft8activity.eu/index.php/en</a>                           |
| 7              | 1900      | 7 2000    | 1.8-28  | CWops Mini-CWT Test                         | CW        | Name, mbr or SPC                           | <a href="http://cwops.org/cwops-tests">cwops.org/cwops-tests</a>                                       |
| 7              | 1900      | 7 2030    | 3.5     | RSGB FT4 Contest Series                     | Dig       | 4-char grid square                         | <a href="http://www.rsgbcc.org/hf">www.rsgbcc.org/hf</a>                                               |
| 7              | 2000      | 7 2100    | 3.5     | UKEICC 80-Meter Contest                     | Ph        | 6-char grid square                         | <a href="http://ukeicc.com/80m-rules.php">ukeicc.com/80m-rules.php</a>                                 |
| 8              | 0300      | 8 0400    | 1.8-28  | CWops Mini-CWT Test                         | CW        | Name, mbr or SPC                           | <a href="http://cwops.org/cwops-tests">cwops.org/cwops-tests</a>                                       |
| 10             | 0000      | 10 0600   | 1.8-28  | QRP ARCI Spring QSO Party                   | CW        | RS, SPC, mbr or power                      | <a href="http://qrparci.org/contest">qrparci.org/contest</a>                                           |
| 10             | 0700      | 11 1300   | 1.8-28  | JIDX CW Contest                             | CW        | RST, JA prefecture or CQ zone              | <a href="http://jidx.org/jidxrule-e.html">jidx.org/jidxrule-e.html</a>                                 |
| 10             | 1200      | 11 1200   | 1.8-28  | OK/OM DX Contest, SSB                       | Ph        | RS, county code or serial                  | <a href="http://okomdx.crk.cz">okomdx.crk.cz</a>                                                       |
| 10             | 1200      | 11 1200   | 3.5-28  | FTn DX Contest                              | Dig       | RST, state or province or serial           | <a href="http://europeanft8club.wordpress.com">europeanft8club.wordpress.com</a>                       |
| 10             | 1200      | 11 1800   | 3.5-28  | IG-RY World Wide RTTY Contest               | Dig       | RST, 4-digit year first licensed           | <a href="http://igry.webs.com/ig-ry-ww-contest">igry.webs.com/ig-ry-ww-contest</a>                     |
| 10             | 1200      | 11 2359   | 1.8-50  | SKCC Weekend Sprintathon                    | CW        | RST, SPC, name, mbr or "none"              | <a href="http://www.skccgroup.com">www.skccgroup.com</a>                                               |
| 10             | 1300      | 11 2200   | 1.8-UHF | Nebraska QSO Party                          | CW Ph     | County or SPC (or grid for FT8)            | <a href="http://www.nebraskaqsoparty.org">www.nebraskaqsoparty.org</a>                                 |
| 10             | 1400      | 11 0200   | 1.8-144 | New Mexico QSO Party                        | CW Ph Dig | Name, NM county or SPC                     | <a href="http://newmexicoqsoparty.org">newmexicoqsoparty.org</a>                                       |
| 10             | 1600      | 11 0400   | 1.8-28  | Georgia QSO Party                           | CW Ph     | RST, GA county or SPC                      | <a href="http://gaqsoparty.com">gaqsoparty.com</a>                                                     |
| 10             | 1800      | 11 1800   | 1.8-144 | North Dakota QSO Party                      | CW Ph     | RS(T), ND county or SPC                    | <a href="http://ndarriseq.com">ndarriseq.com</a>                                                       |
| 10             | 2100      | 11 2100   | 1.8-28  | Yuri Gagarin International DX Contest       | CW        | RST, ITU zone                              | <a href="http://gc.qst.ru/en/section/32">gc.qst.ru/en/section/32</a>                                   |
| 11             | 1000      | 11 2100   | 3.5-14  | WAB 3.5/7/14 MHz Data Modes                 | Dig       | RS, serial, WAB square or country          | <a href="http://wab.intermip.net">wab.intermip.net</a>                                                 |
| 11             | 1200      | 12 1100   | 3.5-28  | DIG QSO Party, CW                           | CW        | RST, mbr or "none"                         | <a href="http://diplom-interessen-gruppe.info">diplom-interessen-gruppe.info</a>                       |
| 11             | 1500      | 11 1600   | 3.5     | Hungarian Straight Key Contest              | CW        | RST, serial, power                         | <a href="http://hskc.ha8kux.com">hskc.ha8kux.com</a>                                                   |
| 11             | 1900      | 11 2030   | 3.5     | RSGB RoLo SSB                               | Ph        | RS, 6-char grid of previous QSO            | <a href="http://www.rsgbcc.org/hf">www.rsgbcc.org/hf</a>                                               |
| 12             | 0000      | 12 0200   | 1.8-28  | 4 States QRP Second Sunday Sprint           | CW Ph     | RS(T), SPC, mbr or power                   | <a href="http://www.4sgrp.com">www.4sgrp.com</a>                                                       |
| 12             | 1900      | 12 2030   | 3.5     | RSGB 80-Meter Club Championship, CW         | CW        | RST, serial                                | <a href="http://www.rsgbcc.org/hf">www.rsgbcc.org/hf</a>                                               |
| 14             | 0030      | 14 0230   | 3.5-14  | NAQCC CW Sprint                             | CW        | RST, SPC, mbr or power                     | <a href="http://naqcc.info">naqcc.info</a>                                                             |
| 14             | 1700      | 14 2000   | 432     | VHF-UHF FT8 Activity Contest                | Dig       | 4-char grid square                         | <a href="http://ft8activity.eu/index.php/en">ft8activity.eu/index.php/en</a>                           |
| 16             | 2100      | 17 2100   | 1.8-28  | Holyland DX Contest                         | CW Ph Dig | RS(T), 4X area or serial                   | <a href="http://larc.org/larc/#HolylandContest">larc.org/larc/#HolylandContest</a>                     |
| 17             | 0500      | 17 0859   | 3.5,7   | ES Open HF Championship                     | CW Ph     | RS(T), serial                              | <a href="http://www.erau.ee/en">www.erau.ee/en</a>                                                     |
| 17             | 0600      | 18 0559   | 3.5-28  | Worked All Provinces of China               | CW Ph     | RS(T), province or serial                  | <a href="http://www.mulandxc.com">www.mulandxc.com</a>                                                 |
| 17             | 0700      | 18 0659   | 3.5-28  | YU DX Contest                               | CW Ph     | RS(T), YU county or serial                 | <a href="http://yudx.yu1srs.org.rs">yudx.yu1srs.org.rs</a>                                             |
| 17             | 0900      | 18 2359   | 3.5-28  | CQMM DX Contest                             | CW        | RST, continent                             | <a href="http://www.cqmmdx.com">www.cqmmdx.com</a>                                                     |
| 17             | 1400      | 18 2000   | All     | Texas State Parks on the Air                | CW Ph Dig | RS(T), TX park or SPC                      | <a href="http://www.tsputa.org">www.tsputa.org</a>                                                     |
| 17             | 1600      | 18 0400   | 3.5-28  | Michigan QSO Party                          | CW Ph     | Serial, MI county or SPC                   | <a href="http://migp.org/Rules.htm">migp.org/Rules.htm</a>                                             |
| 17             | 1700      | 18 1200   | 3.5-28  | EA-QRP CW Contest                           | CW        | RST, category code                         | <a href="http://www.eaqrp.com">www.eaqrp.com</a>                                                       |
| 17             | 1800      | 17 2159   | 1.8-50  | Feld Hell Sprint                            | Dig       | RST, mbr, SPC, grid                        | <a href="http://sites.google.com/site/feldhellclub">sites.google.com/site/feldhellclub</a>             |
| 17             | 1800      | 18 1800   | 1.8-144 | Ontario QSO Party                           | CW Ph     | RS(T), ON county or SPC                    | <a href="http://www.va3cco.com">www.va3cco.com</a>                                                     |
| 18             | 1800      | 18 2359   | 3.5-28  | ARRL Rookie Roundup, SSB                    | Ph        | Name, 2-digit year licensed, SPC           | <a href="http://www.arrl.org/rookie-roundup">www.arrl.org/rookie-roundup</a>                           |
| 18             | 2300      | 19 0100   | 1.8-28  | Run for the Bacon QRP Contest               | CW        | RST, SPC, mbr or power                     | <a href="http://qrcontest.com/pigrun">qrcontest.com/pigrun</a>                                         |
| 21             | 1900      | 21 2030   | 3.5     | RSGB 80-Meter Club Championship, SSB        | Ph        | RS, serial                                 | <a href="http://www.rsgbcc.org/hf">www.rsgbcc.org/hf</a>                                               |
| 24             | 0001      | 25 2359   | 28      | 10-10 International Spring Contest, Digital | Dig       | Name, mbr or "0," SPC                      | <a href="http://www.ten-ten.org">www.ten-ten.org</a>                                                   |
| 24             | 0800      | 24 1800   | 3.5-21  | QRP to the Field                            | CW Ph     | RST, SPC, name or SOTA ID                  | <a href="http://www.zianet.com/grp">www.zianet.com/grp</a>                                             |
| 24             | 1300      | 25 1259   | 1.8-28  | Helvetia Contest                            | CW Ph Dig | RS(T), HB canton or serial                 | <a href="http://www.uska.ch/contest">www.uska.ch/contest</a>                                           |
| 24             | 1600      | 25 2159   | 7-28    | Florida QSO Party                           | CW Ph     | RS(T), FL county or SPC                    | <a href="http://floridagsoparty.org/rules">floridagsoparty.org/rules</a>                               |
| 25             | 1200      | 25 1800   | 3.5,7   | International Vintage Contest HF            | CW Ph     | RS(T), 6-char grid square                  | <a href="http://contestvintage.beepworld.it">contestvintage.beepworld.it</a>                           |
| 25             | 1700      | 25 2059   | 3.5-28  | BARTG Sprint 75                             | Dig       | Serial                                     | <a href="http://bartg.org.uk/wp">bartg.org.uk/wp</a>                                                   |
| 28             | 0000      | 28 0200   | 1.8-50  | SKCC Sprint                                 | CW        | RST, SPC, name, mbr or "none"              | <a href="http://www.skccgroup.com">www.skccgroup.com</a>                                               |
| 28             | 2000      | 28 2100   | 3.5     | UKEICC 80-Meter Contest                     | CW        | 6-char grid square                         | <a href="http://ukeicc.com/80m-rules.php">ukeicc.com/80m-rules.php</a>                                 |
| 29             | 1900      | 29 2030   | 3.5     | RSGB 80-Meter Club Championship, Data       | Dig       | RST, serial                                | <a href="http://www.rsgbcc.org/hf">www.rsgbcc.org/hf</a>                                               |

There are a number of weekly contests not included in the table above. For more info, visit: [www.qrpfoxhunt.org](http://www.qrpfoxhunt.org), [www.nccsprint.com](http://www.nccsprint.com), and [www.cwops.org](http://www.cwops.org). All dates refer to UTC and may be different from calendar dates in North America. Contests are not conducted on the 60-, 30-, 17-, or 12-meter bands. Mbr = Membership number. Serial = Sequential number of the contact. SPC = State, Province, DXCC Entity, XE = Mexican state. Listings in blue indicate contests sponsored by ARRL or NCJ. The latest time to make a valid contest QSO is the minute listed in the "Finish Time" column. Data for Contest Corral is maintained on the WATBNM Contest Calendar at [www.contestcalendar.com](http://www.contestcalendar.com) and is extracted for publication in QST 2 months prior to the month of the contest. ARRL gratefully acknowledges the support of Bruce Horn, WATBNM, in providing this service.